

Technical consulting for smart  
Site Investigations. Quality  
management to reduce  
geotechnical risk and provide  
cost effective and adequate  
design.

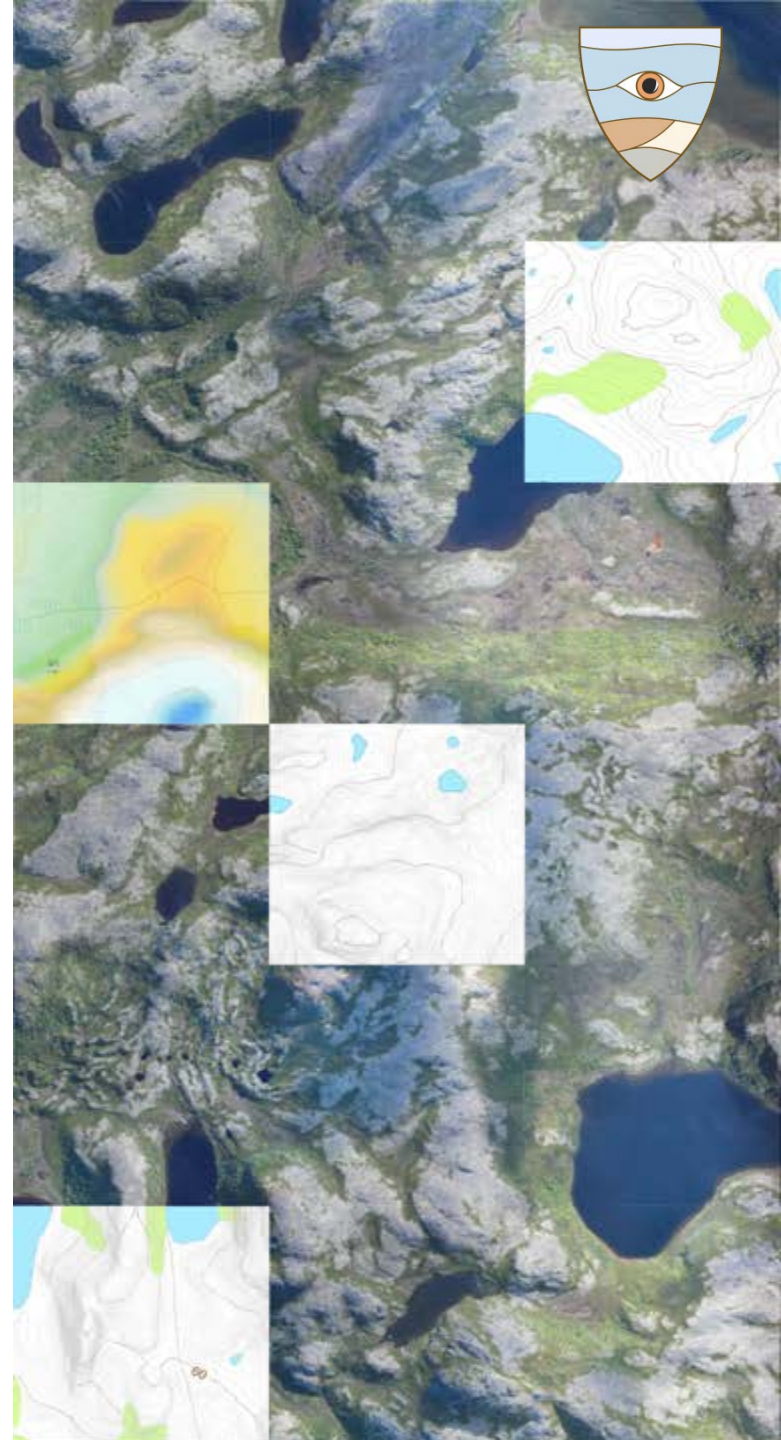
2019г.

Maxim Y. Shokalsky

+7-910-477-69-90 / +7-916-245-43-31

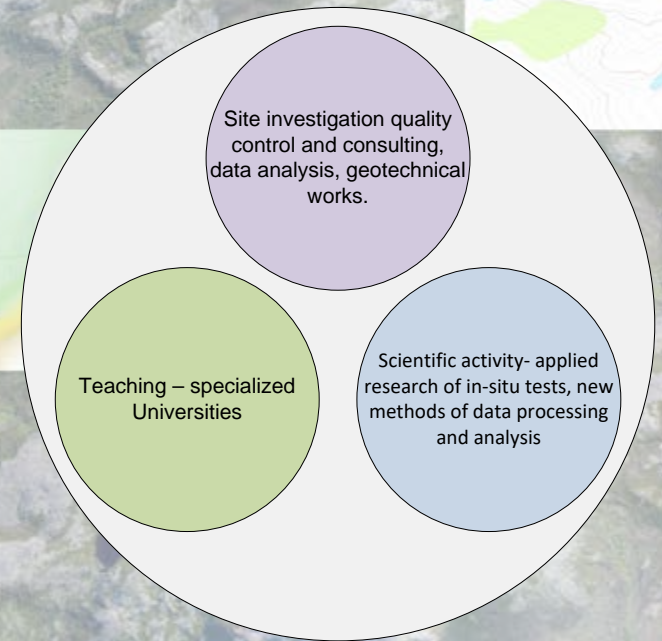
[www.shminsitu.ru](http://www.shminsitu.ru)

[1@shminsitu.ru](mailto:1@shminsitu.ru)



# About the company

- Company details.
- Contacts, news, website  
[www.shminsitu.ru](http://www.shminsitu.ru)







# About the company

- Experience onshore, nearshore and offshore.
- Work experience both in Russia and abroad. Knowledge of work practice. High qualification in advanced in-situ technologies.
- Experience throughout the chain - from concept to project implementation. Ability to implement end-to-end quality control.
- The company was established by specialists with significant experience – more than 1000 objects. CV Director. Many errors were analyzed, which will help to avoid them in the future.

Client

Design company

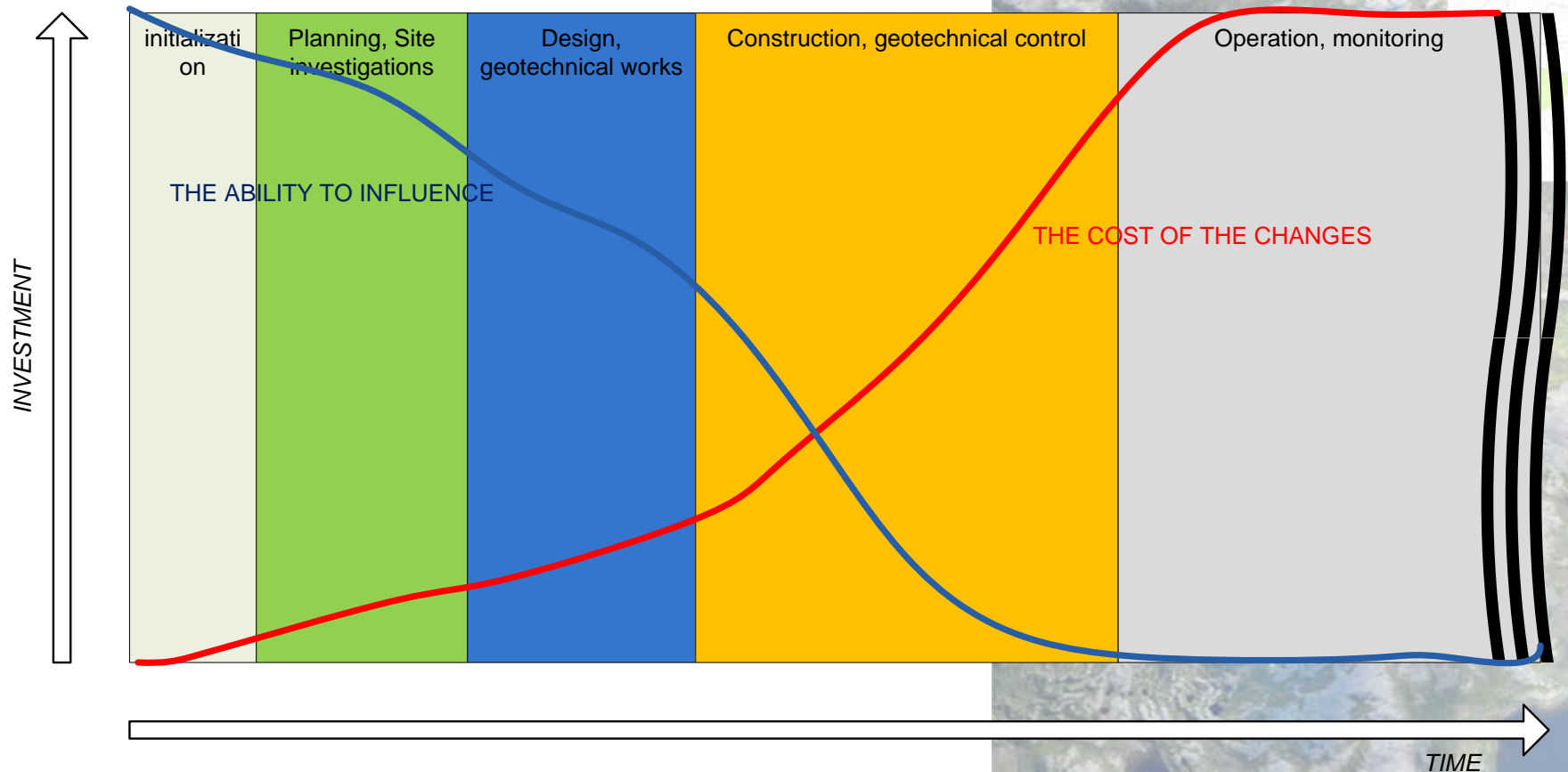
Site investigation  
contractor

Technical and author  
supervision

Experience in complex  
analysis and data  
validation



# Any construction project

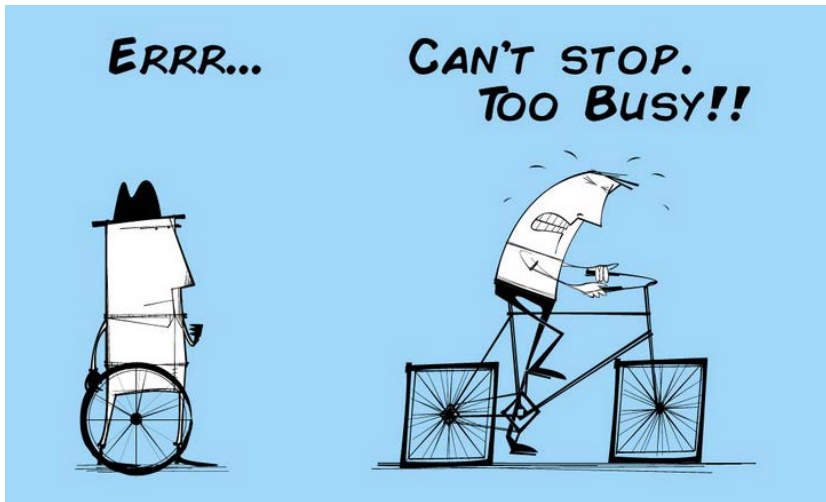


- Site investigations, geotechnical works and control – are key activities for design and construction. Smart management and control of these activities – is the way to reduce geotechnical risk and provide cost effective and adequate design.



# Any construction project

- Refusal of Technical and Author's supervision of works is like a shot in the leg before a marathon. The wrong way of supervision works is a like refusal from it.
  - **samples from the practice.**



- How much are you willing to spend on quality control and survey, if the total cost of the project-billions of rubles ?
  - **samples from the practice.**





# Complexity of Site Investigation quality control and control of initial construction works.



- Site Investigation quality control and control of initial construction works:
  - *Internal quality control systems of survey companies - do not always work.*
  - *Quality control from the Client side – do not always work or sometimes work not correctly.*
  - *Expertise - not interested in quality, only formal compliance with norm.*
  - *Geotechnical control and author's supervised control - do not always work .*
  - *End to end quality control through all stages – very very very seldom, mostly depend on personalities.*
- – samples from the practice.





# Why it is so important to manage the quality of Site Investigations?

1. The impact of Site Investigation quality and quality of some geotechnical control works on accidents/problems in construction = loss of time and money - **from 20 to 85% of the total number of problems.**
2. The cost of foundations is a significant part of the construction costs - **inaccurate site investigations = either burying money in the soil, either problems during construction - see above the item 1.**
3. One of the main problems is fragmentation of processes / lack of feedback between project participants. **An integrator is needed. Geotechnical integrity manager. With a wide outlook.**
4. Drawing (fairy tale) surveys -**the responsibility for Site Investigations is often depend on ones, but others implement the project and receive all geotechnical risks. Checking and verification is required.**

– **samples from the practice.**



# Find yourself

- Possible Clients:

Banks- design and  
construction  
financing

Insurance company-  
insurance of risks of  
construction

Developers /  
investors

Design companies

Construction  
companies

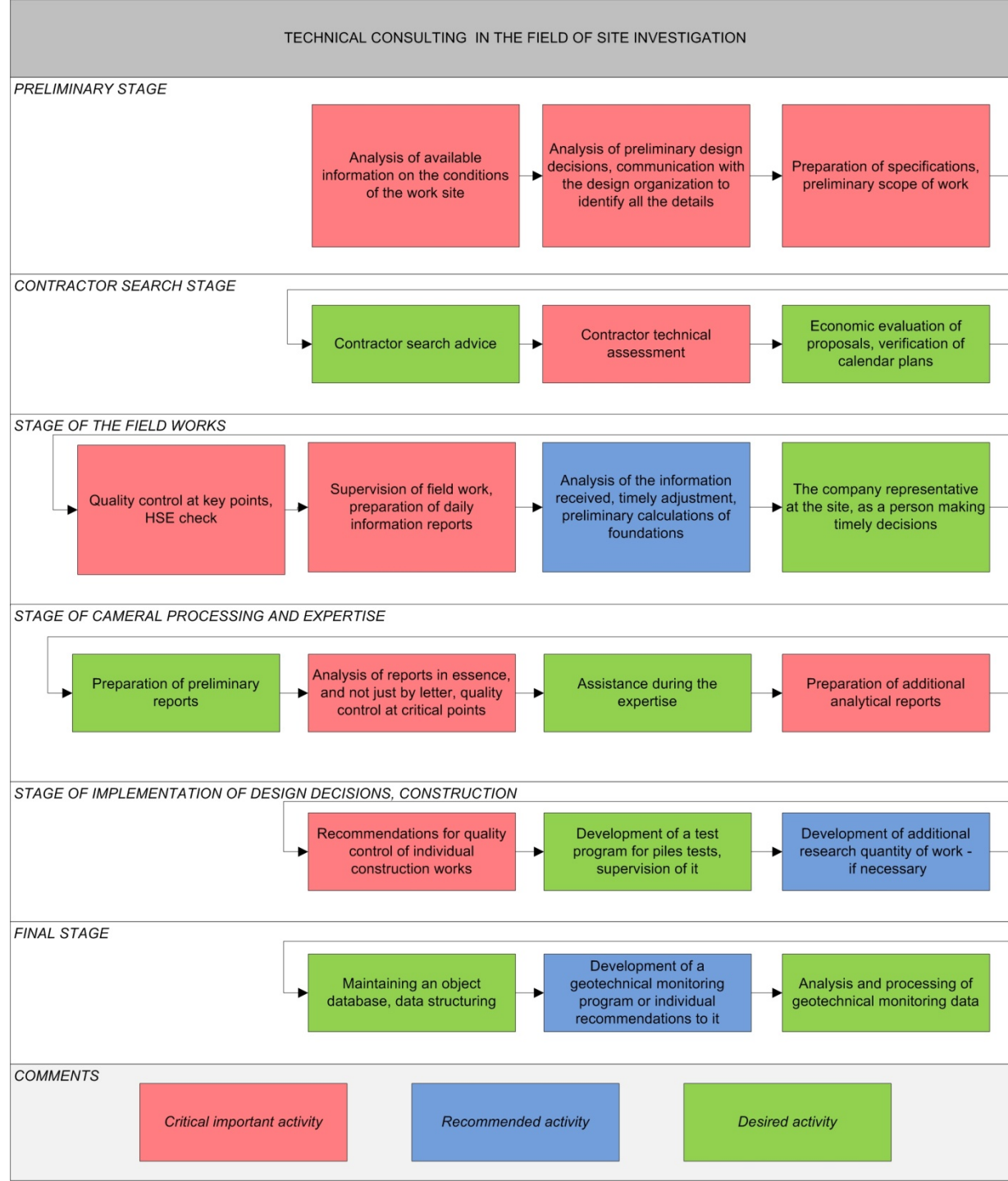
Expertise

- Who invests money and has responsibility, who is linked with the project implementation.



# our service

- Site Investigation quality management
- Possible as work in the complex, and individual activity.
- Promptly, confidentially, impartially

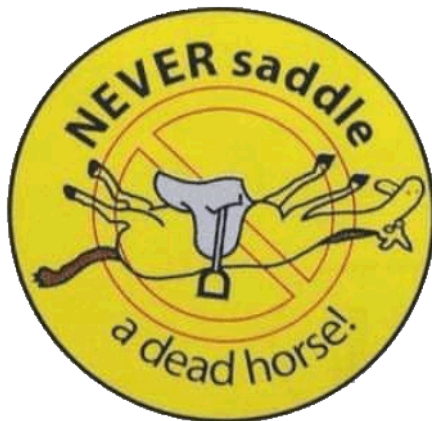




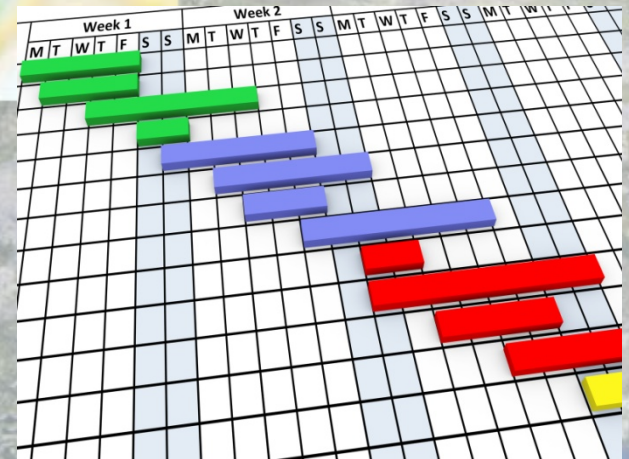
# Preliminary stage

- Analysis of available data.
- Provide specification for geotechnical works, recommendations for the implementation of surveys.
- Assistance in the selection and technical evaluation of a subcontractor.

*PDF, word, excel,  
database.*



Implementation of  
modern in-situ methods  
in practice – CPTU,  
SCPTU, RCPTU,  
PPDT&PPST – guaranty  
of the quality.



programme  
of work



# Field works stage

- General HSE control .
- Key point control.
- Client site representative onsite.
- **Prompt data analysis + prompt actions = predicted result**

**DAILY PROGRESS REPORT**

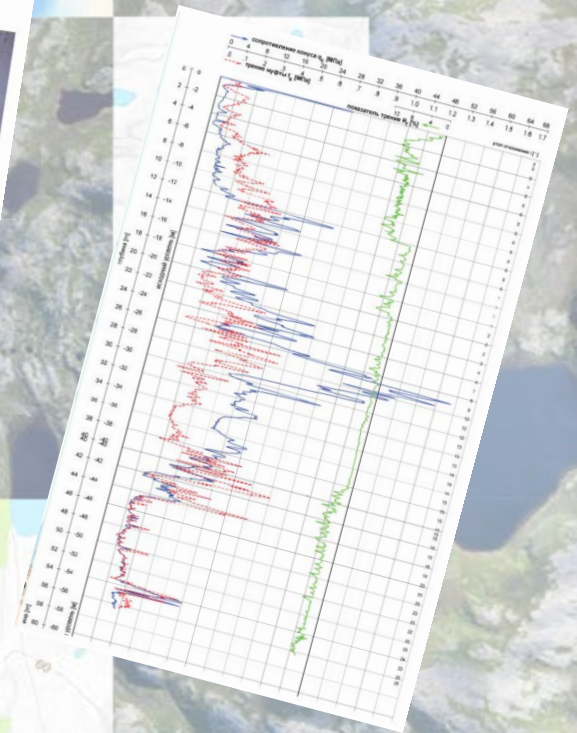
PROJECT : \_\_\_\_\_

SUB No. \_\_\_\_\_ Date: \_\_\_\_\_

Weather: Sunny ☐ Rainy ☐ Cloudy ☐ Temperature \_\_\_\_\_ Humidity \_\_\_\_\_

**ACTIVITY DETAILS**

	Remarks
1	
2	
3	
4	
5	
6	
7	

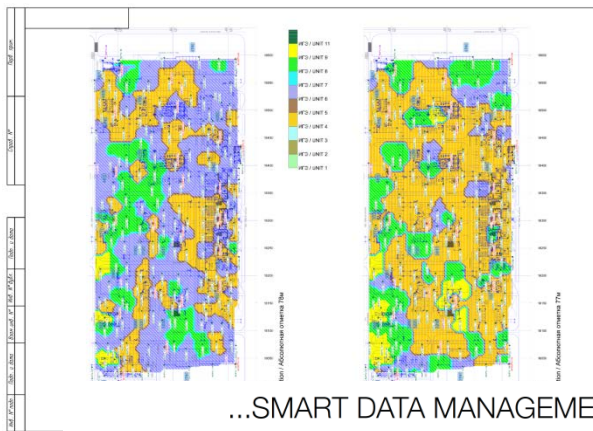






# Data processing, reporting.

- Analysis in essence, not by letter.
- Complex data analysis.
- Additional geotechnical recommendations and calculations.
- DATABASE.



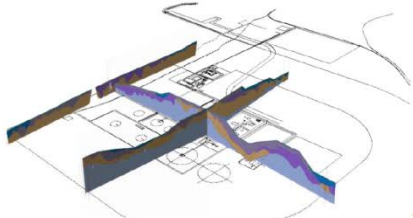
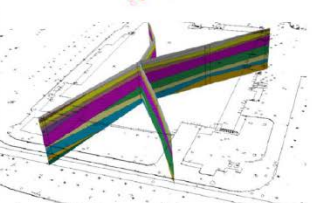
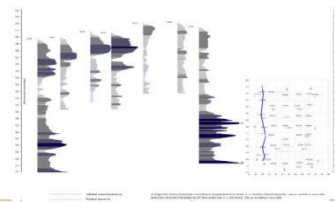
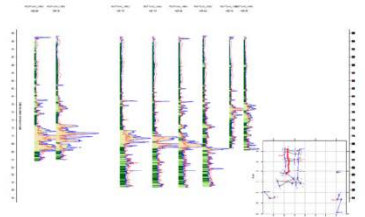
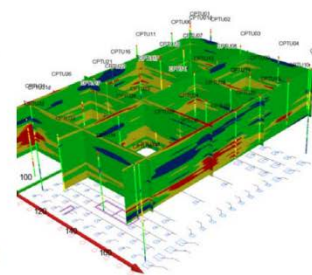
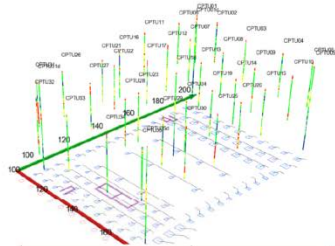
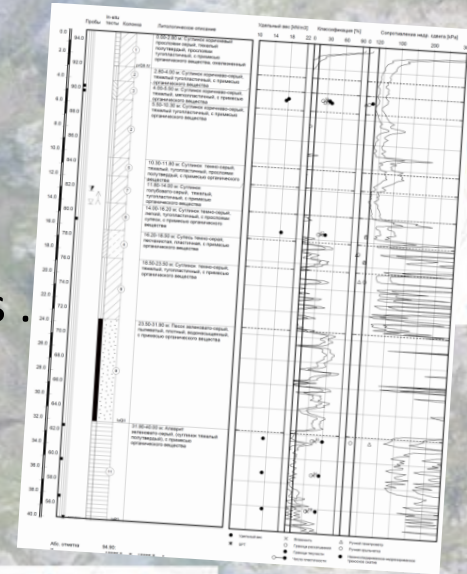
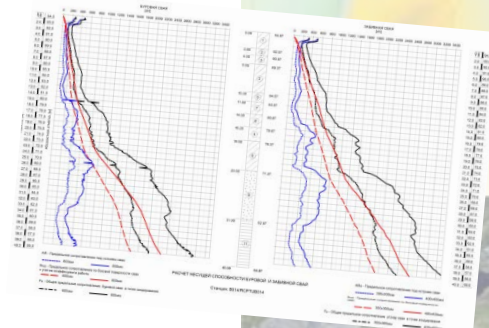
...SMART DATA MANAGEMENT



**GeODin Portal Server:** это дизайнер динамической Веб-страницы для представления ваших данных. Вы создаете шаблоны для изображения с помощью **GeODin®** инструментов в привычном окружении. Гиперссылки на другие страницы и Map-Серверы задаются на переменных текстах, Таблицах или временных графиках. **GeODin Portal Server** ведет все Веб-презентации в режиме реального времени на основе существующих данных актуальной БД.

- Создание Веб-порталов с помощью **GeODin®** инструментов
- Динамические Веб-страницы на основе **GeODin®** БД с помощью шаблонов
- Показ гео-данных в режиме реального времени
- Скачивание документации в формате PDF
- Расширенный **GeODin Guardian** для наблюдения за БД (Система подачи тревоги и регулярные отчеты по качеству)

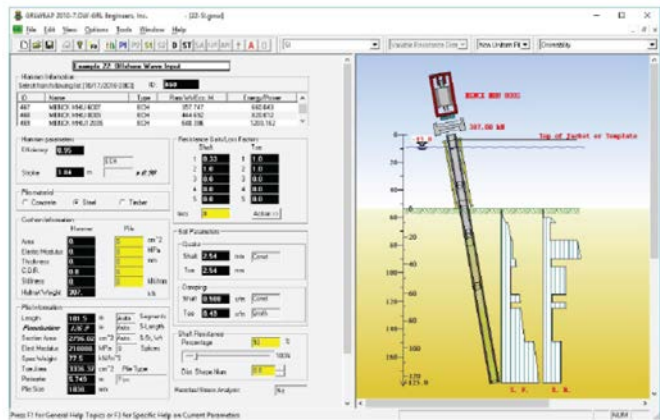
PDF





# Individual construction activity

- Earthworks – soil improvement control, soil compaction control and so on.
- Pile driving and testing.
- Using of drones for monitoring and control



GRLWEAP Main Input Screen

Static and dynamic  
PLT , soil sampling,  
CPT+DMT.





# Conclusions

- 1. We have a wide range of experience that allows us to manage the quality of surveys at all stages-from the beginning of the surveys to the initial construction work.*
- 2. Our support will help you to predict problems and avoid them. Will help reduce geotechnical risk or solve a problem that already exists.*
- 3. We will be glad to assist in the implementation of your (our ) project! Anywhere in Russia and abroad. Onshore and offshore.*
- 4. SHMinsitu - is a powerful player in your team.*





ЕСТЬ  
ВОПРОСЫ ?



ANY QUESTIONS ?

- [1@shminsitu.ru](mailto:1@shminsitu.ru)
- +7-916-245-43-31 / +7-910-477-69-90
- Information in the presentation is represented schematically, detailed presentation is available upon request.

